



THE STONEHENGE

SCHOOL Weekly Newsletter

Issue No. 23rd | 14th March 2025

UPCOMING DATES

MARCH

Mon 24th Yr 11 Drama
Exam/Moderator

Wed 26th
Yrs 7 & 8 Theatre Trip
to see 'The Lion, The
Witch and The
Wardrobe'

Fri 28th
Big Sleep, Salisbury
Cathedral

A message from the Headteacher

Dear Parents and Carers,

As we move further into the term, I wanted to share some of the key highlights from school life this week.

Quality Assurance Review - A Positive Outcome

This week, we received the findings from our recent Challenge Partners Quality Assurance Review, and I'm pleased to report that the school continues to be rated as effective across all areas. The reviewers highlighted our strong leadership team, the positive relationships between staff and students, and the improvements we've made in reducing suspensions and increasing support for students who need it. They also praised the school's focus on reading, careers education, and the sense of belonging among staff and students.

Curriculum and Teaching

It highlighted the strength of our curriculum and teaching, noting that lessons start with clear routines and a sense of purpose. Students benefit from well-structured learning, where expectations are high, and teachers use engaging strategies to check understanding. The school's focus on oracy and reading is helping students express themselves with confidence, while interactive tools like topic roadmaps and in-the-moment assessment techniques ensure learning is accessible and meaningful. Relationships between staff and students were praised as a key strength, creating a positive and supportive environment where students feel motivated to improve.

Student Leadership Making a Difference

Our student leaders continue to have a real impact on the school. They have been instrumental in shaping decisions, including improvements to security measures following student requests for CCTV. It's fantastic to see their voices being heard and valued.

Attendance Rewards & House Competitions

Attendance remains a top priority, and we've introduced some fun house competitions to motivate students. Tutor groups are now competing in an attendance 'World Cup,' with rewards for those who maintain high attendance. This has been a great way to build team spirit while reinforcing the importance of being in school every day.

Careers Education - Expanding Opportunities

Our careers programme is going from strength to strength, offering students a wide range of opportunities to explore future pathways. From careers fairs to apprenticeship roadshows, there's something for everyone. Parents can also stay up to date through the weekly careers newsletter within this main newsletter.



A Welcoming and Inclusive School

We continue to embrace the diversity within our school community, with students from a range of backgrounds, including many from military families. Our pastoral team works hard to ensure that all students feel supported, and we are proud of the inclusive environment we are creating.

Library Revamp & Reading Focus

Our newly refurbished library is proving to be a popular hub for students, with library prefects leading initiatives to promote reading across the school. It was fantastic to see them take the lead in organising World Book Day activities.

Looking Ahead

As always, thank you for your continued support. We look forward to building on these successes and ensuring that every student at The Stonehenge School continues to thrive.

FSM STUDENTS INCREASE IN DAILY ALLOWANCE

Starting from 1st April 2025, the daily allowance for students entitled to free school meals will increase from £2.50 to £2.60. The £2.60 will be automatically added to the student's account each day, and any unused funds will not carry over.

Parents of students who receive free school meals may also choose to add additional funds to their child's account if they wish to purchase extra food beyond the £2.60 allowance.

RESPECT FOR OUR COMMUNITY

We have recently received concerns from local residents regarding the behaviour of some pupils outside of school. These include reports of students ringing doorbells, making excessive noise, and leaving litter near the flats opposite Tesco on London Road. Additionally, residents near Holders Road have reported items being thrown over fences into their gardens including heavy items that could cause injury.

While we know that the vast majority of our pupils are respectful and responsible members of the community, these incidents have a negative impact on how our school is perceived. As The Stonehenge School is the only secondary school in the town, we should all take pride in the reputation of our students and ensure that our actions reflect the values we uphold.

We ask parents to speak with their children about the importance of respectful behaviour in the community, and we will also be addressing this in school. If any pupil has information about who may be responsible, we encourage them to speak to a member of staff.

Our students are a credit to the school, and we want to ensure that their positive contributions are what stand out. By working together, we can ensure that all members of the community feel safe and respected.

Thank you for your support.
Mrs Dean



House Rewards Day

We are excited to announce a House Rewards Day on Thursday 3rd April, for all students in years 7 - 10. The House system aims to: build a sense of belonging within the school community; offer opportunities to develop social, intellectual, physical and practical skills; provide a sense of achievement both inside and outside of the classroom; promote fun and excitement through competition and offer opportunities for student leadership. Throughout the year, students have been given opportunities to earn House points both inside and outside of the classroom, and here are the final results:

- 1st place- Archer
- 2nd place- Sarum
- 3rd place- Barrow
- 4th place- Solstice

Archer students will have the opportunity to go to Chessington. Sarum, Barrow and Solstice will have the opportunity to try new and exciting activities on that day in school, and not follow their usual timetable. They will be enjoying a silent disco, an escape room challenge as well as various team building activities provided by an external outdoor education company, up on Holders field. We are able to offer Sarum House an additional reward of Laser tag for coming second place, also provided by the same company.

Please go to Class Charts to find all of the relevant information, as well as details around cost.

The deadline to pay for Chessington is: Friday 21st March.

The deadline to pay for the internal House activities is: Friday 28th March



Quarter Finals of The County Cup



The year 8 boys football team were victorious in their quarter final vs Sheldon School. Stonehenge came under pressure early into the game but regained control after some brilliant football from Jack who played a brilliant ball to Freddie who put Stonehenge 1-0 up mid way through the first half. We piled on more pressure but were unable to make it count with a second goal and Sheldon equalised to make it 1-1 at half time.

Into the second half and Stonehenge continued their dominance hitting the post and crossbar in a matter of minutes. Penalties were looming, but with 5 minutes to play Freddie scored a brilliant freekick to put us back into the lead. 2-1. Sheldon then got back into control of the game and were putting us under pressure. Stonehenge defenders dealt with everything Sheldon had to throw at them and in the last minutes of the game broke away on a counter attack and Freddie secured his hatrick.

Stonehenge now await their opponents in the semi-final of the county cup.

Mr Roach



England Women's U15 pathway

Lily's formal identification on the England Women's U15 pathway is a significant milestone in her football journey. Her dedication and hard work have brought her to this exciting point, and we are optimistic about her future in the sport. We will continue to support her ambitions and keep you updated on her progress.

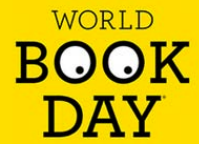
She has been reminded to not forget about the free tickets and boots for the PE Department staff!!

Mr Protheroe



World Book Day

Last week saw The Stonehenge School take place not just in World Book Day, but in World Book Week!

The logo for World Book Day, featuring the words "WORLD BOOK DAY" in a stylized, bold font. "WORLD" is in a smaller font above "BOOK", which is above "DAY". The letters are black on a yellow background.

This started on Monday with a Makerspace activity, where students had the opportunity to design and make their own badges and bookmarks in the library. A 'World Book Week-long puzzle trail also started on this day, with students spending their social time at the school site in order to solve the code.

On Tuesday, Miss Bowen led a creative writing workshop in the library allowing students the opportunity to write for pleasure.

Wednesday's activity was a Harry Potter style potions lab with Mr Church and Mrs James who had the amazing ability to make physical objects disappear!

On Thursday- the big day itself- some Year 7 students donned their literary fancy dress- as well as staff- and some even joined us for the school's 'Big Read' event in the library...who knew that Miles Morales loved our library so much?! Year 7 & 8 students also enjoyed a short story, read to them across the day by their various subject teachers.

The week culminated with Ms Hillier's illustrator workshop, which allowed students to explore the world of art in literature.

Alongside this, students hunted for golden tickets all week in order to be one of the first students to be given the opportunity to use our brand new book vending machine. The final designs for this (after our competition) have been sent to the company ready to be placed onto our machine. The winner of our World Book Day poster competition was announced last week.

We felt it important that all students be given a World Book Day token, which can be swapped for any of the free book selections available in retailers such as Tesco, The Works and Waterstones, or put towards the cost of any book. These were handed to all students during registration on Thursday. If a student has lost theirs, a digital version can be downloaded here: <https://www.worldbookday.com/books-and-tokens/book-token/digital-tokens/> In addition to this, Year 7 & 8 were taken to the library by their English teacher to choose one of the free books available this year.

We place so much emphasis on this event as Reading for pleasure is the single biggest indicator of a child's future success, more than family circumstances, parents' educational backgrounds or income (Organisation for Economic Co-Operation & Development).

We would like to thank our excellent Library prefects for their creative ways of celebrating this event, and Mrs Macbeth and Mrs Thompson for organising these activities for the students to enjoy.



As a school we are working towards gaining Dyslexia Friendly Schools status. The majority of the work has been to make the classrooms and teaching dyslexia friendly as well as identifying those with a dyslexic profile and putting in intervention, where necessary. We have also signposted how dyslexia can affect a person not just in their education. Here is another factsheet:

Dyslexia Fact sheet

Dyslexia is a specific learning difference that primarily affects reading, writing, and spelling skills. It is not related to intelligence but rather how the brain processes language. People with dyslexia often struggle with recognising letter sounds, decoding words, and remembering spellings, even though they may have strong reasoning and problem-solving abilities.

You can read the full Delphi definition of dyslexia [here](#).



- Dyslexia is a lifelong learning difficulty that runs in families and affects reading, spelling, and information processing.



- It is not linked to intelligence and can range from mild to severe, affecting people of all backgrounds.



- As a hidden disability, its signs are not always obvious.



- Every individual's experience of dyslexia is different but it can often occur with other learning difficulties like dyscalculia or dyspraxia.



- Dyslexia can make school, work, and daily life challenging. Misunderstanding of a dyslexic person's struggles may lead to low confidence, shame, and fewer opportunities.



- Diagnosis is available through specialists but is not routine in schools, and cost can be a barrier.

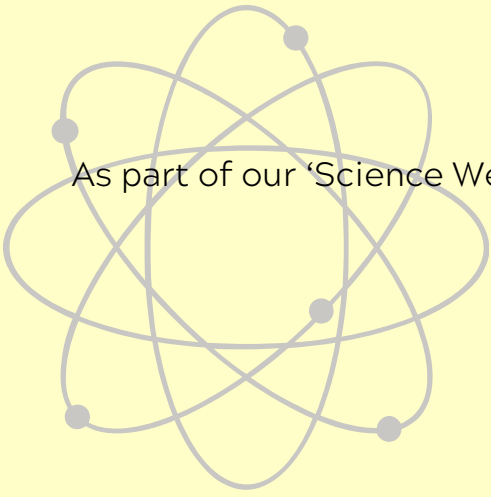


- Simple adjustments at school and work can greatly improve the lives of people with dyslexia.

The British Dyslexia Association is on the campaign to ensure that the government make children with dyslexia a priority, ensure early identification and create dyslexia friendly classrooms. If you would like to find out more about this campaign please click [here](#).

SCIENCE WEEK

As part of our 'Science Week' we had a team come in to work with the students from Andover College



THE STONEHENGE
SCHOOL

CAREERS NEWSLETTER

This newsletter is a collation of all the opportunities we have heard about from employers and universities. Please use the links included to read more information and apply to anything you are interested in. Links are underlined.

OPPORTUNITIES

Last week, we celebrated National Career Week. In addition to this International Women's Day also took place on Saturday 8th March 2025 and British Science Week 2025 takes place from 7th to 16th March 2025. International Women's Day is a global day celebrating the social, economic, cultural, and political achievements of women. The day also marks a call to action for accelerating women's equality. British Science Week is a ten-day celebration of thousands of events running throughout the whole of the UK with the aim of celebrating science, engineering, technology and maths.



Here is the official list of IWD2025 events, which are running up until 20th March 2025. You can also search #IWD2025 on social media to find information on other events and campaigns from various employers and organisations. IWD isn't just for those who identify as female! Here are 10 Things Men can do on International Women's Day to celebrate, support and become an ally of women. Tech We Can (formerly Tech She Can) is a programme of free learning materials that aim to inspire both boys and girls about a future career in technology. Check out this range of videos of current people working in tech. Internationally, 1 in every 10 women in the world lives in extreme poverty. Join this online event to discuss the challenges faced by women living in poverty and explore ways to empower and support them. This event aims to raise awareness about the intersection of gender and poverty, and highlight the importance of addressing these issues in our communities.



JOB OF THE WEEK



Molecular Biologist

Molecular biologists design and conduct experiments to investigate the molecular mechanisms underlying biological processes. They use a range of techniques to isolate, analyse, and manipulate DNA, RNA, and proteins. Watch the video to learn more about how much you could earn, working hours and pathways into the industry.

LABOUR MARKET INFORMATION FACT

Are you wondering why women are fighting for equality?

Here is one example; In the UK, median pay for all employees was 13.1% less for women than for men in April 2024.

Source

If you have any questions or need support, please email office@stonehenge.wilts.sch.uk

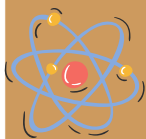


THE STONEHENGE
SCHOOL

CAREERS NEWSLETTER

OPPORTUNITIES

The theme for British Science Week 2025 is “Change and Adapt”. Changing and adapting plays a big part in science; you can find examples in every area of STEM*. Cities, towns and other areas where people live change and adapt as the world’s population grows, plants and animals change and adapt to their surroundings to survive. Technology has changed exponentially and adapted to our new, busier lives (or have we changed as technology has developed?). For example, phone technology has changed rotary home telephones to smartphones.. Take a look at what’s on during British Science Week here. From online webinars to in person science fairs, there is something for everyone to learn more about STEM. This STEM Careers Guide from Youth Employment provides more information on what a STEM career is. They have relevant articles, case studies and apprenticeship opportunities to help you learn more. The case for increasing both the number and diversity of the engineering workforce is compelling and, with research showing the positive impact of STEM careers activity on young people’s understanding of engineering and their likelihood to consider an



Engineering career, Tomorrow’s Engineers, led EngineeringUK, brings together resources to support young people into Engineering careers.

Neon have produced a 4-page downloadable guide for students of all ages, with suggested STEM inspiration content for young people to explore. The guide includes podcasts, competitions, books, TV shows, films, days out, social media accounts, activities and apps.

Discover the Science of Sound! Join this virtual work experience program and explore the fascinating world of acoustics. Learn how sound affects our lives and the environment, and gain practical skills to pursue a career in this dynamic field.



EMPLOYER SPOTLIGHT

“We’re always looking for brilliant people to join the Civil Service. Our roles are varied and all contribute to delivering vital services to the public. Our work touches all aspects of life in the UK, from education and the environment, to transport and defence. You could make a real difference to people’s lives with a career in the Civil Service.”
Read more about Civil Services Careers here.

UNI SPOTLIGHT

“We are a leading UK university committed to international excellence through the creation of world changing research and high quality, inspirational teaching. Leicester is consistently one of the most socially inclusive of the UK’s leading universities with a long-standing commitment to providing fairer and equal access to higher education.”
Read more about University of Leicester’s Courses here.

If you have any questions or need support, please email office@stonehenge.wilts.sch.uk



Sleep out for charity at Salisbury Cathedral by giving up your bed for one night and sleeping on the cold stone floor of the cloisters. Together we're raising vital funds and awareness for Alabaré's work with homeless and vulnerable people across Wiltshire.

Every year hundreds of people join Alabaré's sleep out for charity events.

The BIG Sleep at Salisbury Cathedral has been held for over 16 years as compassionate people give up their warm comfy beds to sleep rough for one night at a unique location. By securing sponsorship we can raise awareness and vital funds to support the work to end homelessness.

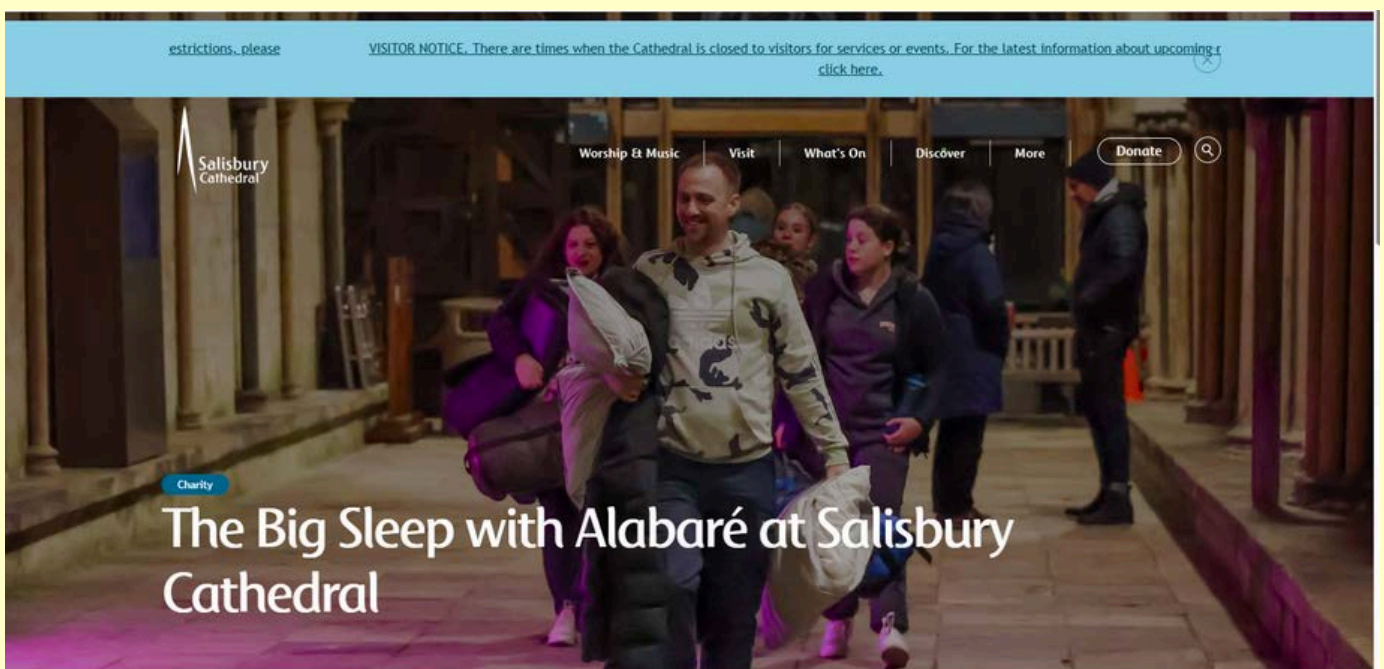
Join us on Friday, 28th March in a poignant community event that sets the right tone of respect and hopefulness.

What is involved on the night?

We are taking a stand against homelessness by bedding down for one night at this beautiful venue in a single act of compassion to help save lives. You will join other participants at the sleep out for charity by sleeping in the cloisters at the magnificent Salisbury Cathedral.

As we hunker down on the Cathedral's ancient flagstones, listen as the Cathedral bursts into life with the amazing, uplifting and lively, Fijian Assembly of God Church Choir. This is not for the faint-hearted - BIG Sleep events have run even when temperatures have plummeted. Hear the stories from some of the people Alabaré has helped, and learn more about our services. The BIG Sleep at Salisbury Cathedral event promises to be a powerful, reflective and yet humbling experience as we bed down like those who are homeless. For us, it will be just one night, and in the morning we can return to our warm homes and comfortable beds.

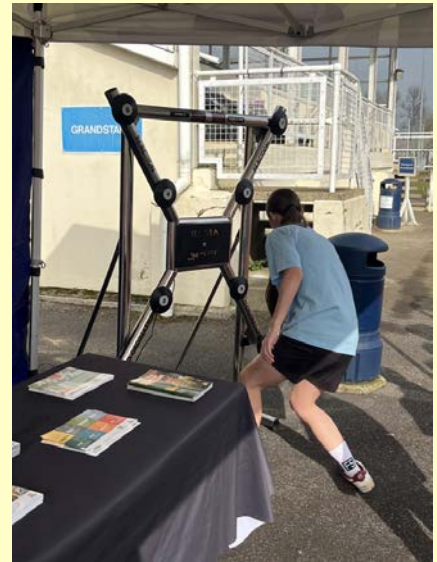
Below are Mrs Dean and Mr Braddick ready for last year's event. If you wish to donate to the event you can do by click the link [here](#).



Female Empowerment Day at Tidworth Oval

Last Wednesday some of our Year 10 girls took part in the Female Empowerment day at Tidworth Oval, which also coincided with International Women's Day.

The Army had set up a variety of activities for the girls to take part in and learn more about the Army. They all had amazing day with some learning how to change a tyre.



Family and Community Learning



Supporting My Teen With Transitions to Adulthood

5 Online Sessions Wednesdays 12.45pm - 2.45pm
Starting Wednesday 26 March 2025

Book by
19 March

Session Dates: 26 March, 2 April, 23 April, 30 April, 7 May



- Promote emotional wellbeing
- Explore post 16 opportunities
- Support life skills, online safety and decision making

Contact familyandcommunitylearning@wiltshire.gov.uk
call the FaCL team on 01225 770478
scan the QR code or visit
<https://workwiltshire.co.uk/family-and-community-learning/>



Our courses are free, if you are 19+ years old, resident in the UK/EU for over three years (some immigration status exempt), have a Wiltshire postcode and meet any of the following criteria: earn less than £25,000 pa, in receipt of benefits, military family, foster carer/care leaver/carer, have a disability.

Wiltshire Council

BARRACUDAS

ACTIVITY DAY CAMPS

HIGHLY RATED
School Holiday
Camps!!!



AT A SCHOOL NEAR YOU IN 2025!

EXCLUSIVE PARENT DISCOUNT

USE CODE **SCHOOL20** FOR AN
EXTRA £20 OFF YOUR BOOKING!

*Minimum 2 days. *Not to be used in conjunction with other offer codes

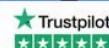
- ⦿ 4½ to 14 year olds!
- ⦿ 80+ Activities!
- ⦿ Choice each session!
- ⦿ Specialist Courses!
- ⦿ Flexible bookings!



OFSTED REGISTERED



barracudas.co.uk
01480 467 567



STUNNING PROM DRESSES

AT UNBEATABLE PRICES

GLAMOROUS,
STYLISH, AND
BUDGET-FRIENDLY!



Open
Monday to Saturday
9.30 am – 4.30 pm

Shine on your special night, shop sustainably and save money!

Visit **Alabaré Wilton Emporium** and find your dream prom dress before they're gone! Mix of new and nearly new dresses, range of styles and sizes available.

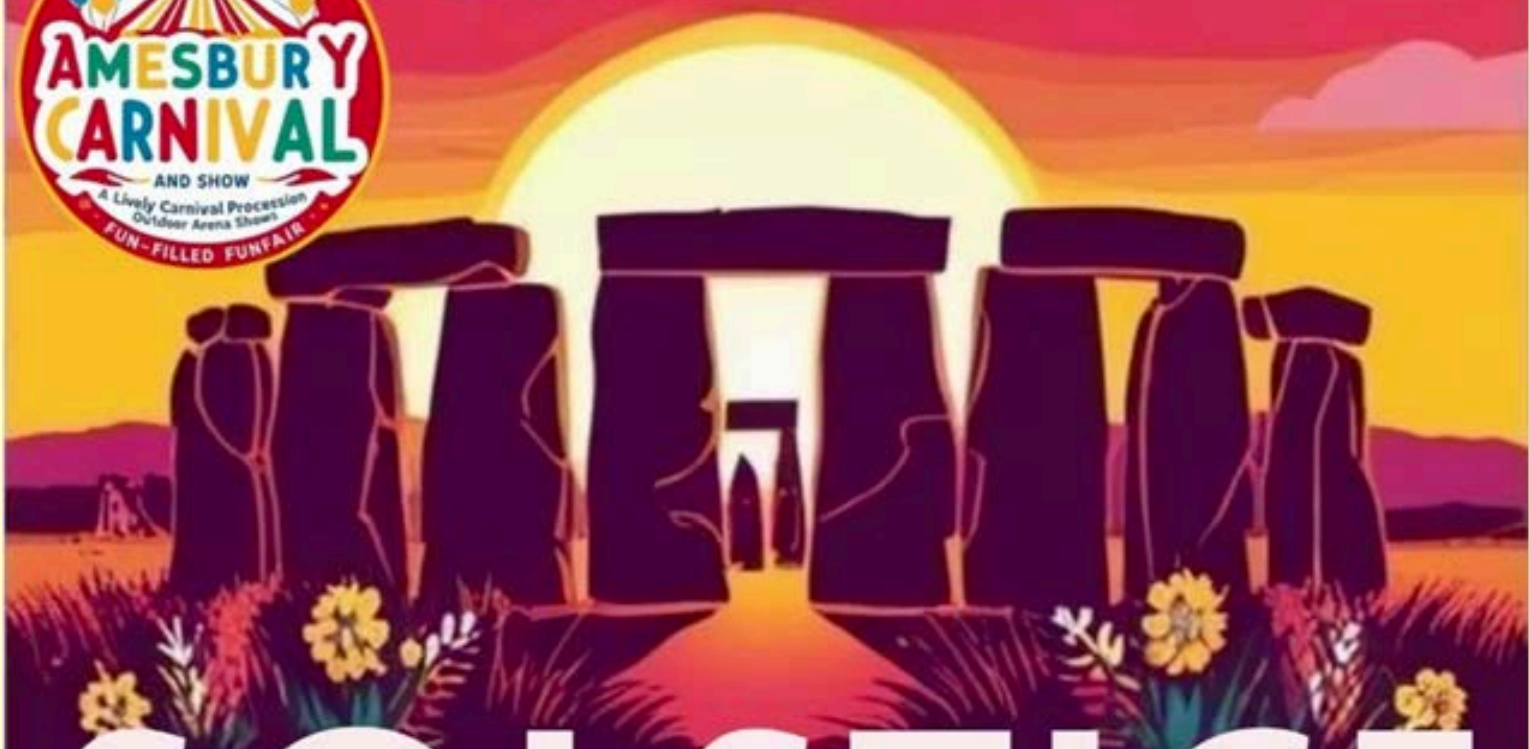
Alabaré Wilton Emporium
Unit 2, Warminster Road,
Wilton, SP2 0AT



Alabaré
WILTON
EMPORIUM



AMESBURY CARNIVAL PRESENTS



SOLSTICE SOUNDS



**ONE STEP
BEHIND**

GLOBAL LEADING
MADNESS TRIBUTE



N-TRANCE

'SET YOU FREE'
INTERNATIONAL NO1



**DJ PAUL
ALEX**

CROWDOKE &
ALL THE BEST HITS

**HOLDERS FIELD,
AMESBURY**

4PM-10.30PM

SUMMER SOLSTICE NIGHT

FRI JUNE 20

AMESBURYCARNIVAL.CO.UK

**TICKETS
£5 ADULT/
£2 CHILD**

TICKETS LIMITED
ONLINE ONLY!

STAFF VACANCIES

Further details and an application form for all our vacancies can be found on our website via the following link - <https://www.stonehenge.wilts.sch.uk/vacancies/>

Caretaker

Salary: Support staff grade E £25,183 - £25,992 per annum with 26 days holiday to be taken in school holidays

Hours are to be discussed with the successful candidate but would be 37 per week, working Monday - Friday

The post will be effective as soon as possible; this is a permanent position.

This position will remain open until filled

We are seeking to recruit a reliable, enthusiastic, and efficient Caretaker to join our Site Team to be responsible for maintaining our school premises.

You will support the Premises Manager to keep the school a safe and engaging environment for our students to learn in. This will involve carrying out both reactive and planned maintenance tasks which may include some plumbing and decoration both internally and externally.

You should provide detail outlining your skills applicable to the role and reasons for applying. This should be returned to Mrs D Harker, The Headteacher's PA, The Stonehenge School, Holders Road, Amesbury, Wiltshire, SP4 7PW

Cover Supervisor

Required as soon as possible

32.50 hours per week/39 working weeks per year (this includes TD Days), Permanent Contract
Monday - Friday 8.15m - 3.15pm

Wiltshire Council pay grade F Point 9 - 11, (£13.69- £14.36 per hour)
actual FTE salary £19,952 - £20,936 per annum

Closing date - Friday 7th March (We reserve the right to close this position if a suitable client is found prior to the closing date)

We are looking for a motivated and enthusiastic Cover Supervisor to join our dedicated team. You will be working to support young people and to cover for absent colleagues, and ensuring that they carry out the work tasks set by the teacher with designated responsibility.

The role will include being a Tutor for which training will be provided. You should be a good classroom practitioner with a genuine enthusiasm for teaching and learning. You should be able to work with pupils covering the full range of age and abilities at our school.

The position would be a beneficial experience for anyone who was considering following a teaching career. We have an incredibly strong record of 'growing our own' teaching staff, from roles with extensive support given in terms of professional and career development, in a collegiate and supportive environment. A comprehensive training programme will be provided to support and develop the successful candidate.

There are a variety of hours/working patterns available up to a maximum of 35 per week. Applications from part time candidates are welcomed as job shares will be considered.

You should provide detail outlining your skills applicable to the role and reasons for applying. This should be returned to Mrs D Harker, The Headteacher's PA, The Stonehenge School, Holders Road, Amesbury, Wiltshire, SP4 7PW

STAFF VACANCIES

Further details and an application form for all our vacancies can be found on our website via the following link - <https://www.stonehenge.wilts.sch.uk/vacancies/>

Exam Invigilators

Scale B point 2, £12.26 per hour

We require additional Exam Invigilators to work with us at The Stonehenge School. We are looking for enthusiastic and supportive individuals to work varied hours during the school day, mainly during GCSE exam periods but also covering internal and modular exams throughout the year. Must be available to work from 8.30 am to cover morning exams.

Previous experience is not essential, as all training will be provided.

Ideal candidates will be

Reliable and flexible

Have good communication skills

Confident and able to offer reassurance during exams

You should provide detail outlining your skills applicable to the role and reasons for applying. This should be returned to Mrs D Harker, The Headteacher's PA, The Stonehenge School, Holders Road, Amesbury, Wiltshire, SP4 7PW

Support We Offer

We are here to help with a whole range of topics including:

Ideas around implementing routines and setting boundaries.

Help to understand your child's needs and build your confidence as a parent.

Help around finances, housing applications, debt support and accessing benefits.

Supporting you 'back to work'

Volunteering opportunities

We can help families access:

Baby Bundles

Healthy start vitamins

Advice on local childcare and applying for funding.

Introductions to other services

Facebook

Our Wiltshire Family Hub Facebook page is another way for families to stay up to date with current services. Make sure you like and follow to stay in touch with us.

Simply click here:



Get in touch with us

If you have any questions or would like more information about our services please call us on one of our numbers below or check out our website:

Freephone:

0800 970 4669

wiltshirefamilyhub@spurgeons.org

Other useful numbers:

Health visitor – Single Point of Access

0300 247 0090

National Breastfeeding helpline

0300 100 0212

Fearfree (Domestic Abuse support Service)

01225 775276

National

Domestic Abuse Helpline

0800 2000 247

Click here to visit
our website

www.wiltshirefamilyhubs.org.uk