



# THE STONEHENGE

## SCHOOL Weekly Newsletter

Issue No. 17 | 24th January 2025

### UPCOMING DATES

#### JANUARY

Thurs 23rd  
Year 11 Parent's Evening

Mon 27th - Fri 31st  
Year 10 Milestone Exams

Wed 29th  
Year 11 An Inspector Calls  
Theatre trip

#### FEBRUARY

Sun 2nd to Tues 4th  
Year 10 trip to Paris  
Disneyland

Headteacher's message ....

#### Traffic and Parking: A Safety Reminder for Our School Community

We have recently been contacted by the Town Council regarding ongoing concerns about parking, speeding, and traffic volumes on Antrobus Road, particularly during school drop-off and pick-up times. These issues, combined with the volume of foot traffic, pose serious safety risks for pedestrians, drivers, and residents alike.

#### Key Concerns Raised by the Town Council

**Inconsiderate Parking:** Many vehicles are parked dangerously, including on blind corners and junctions, creating hazards for pedestrians and other drivers.

**Speeding:** Cars continue to travel at excessive speeds along Antrobus Road, further increasing the likelihood of accidents.

**Traffic Volume:** The combination of school traffic and delivery lorries has turned Antrobus Road into a congested and potentially dangerous area during peak hours.

The Town Council has shared real-life examples of accidents and near-misses, including significant damage to parked vehicles caused by speeding and reckless driving.

#### How You Can Help

To ensure the safety of everyone in our community, we are asking parents and carers to:

Avoid dropping off and picking up pupils directly outside the school: Instead, please use nearby car parks such as B&M and Tesco, which are a short walk away.

Drive responsibly: Adhere to speed limits and take extra care around the school, especially during busy times.

Park considerately: Avoid parking on blind corners, near junctions, or in any way that obstructs pedestrians or other vehicles.

#### Working Together for a Safer Community

We understand that school drop-offs and pick-ups can be challenging, but we urge all parents and carers to take these steps to ensure the safety of our students, staff, and local residents. By working together, we can help reduce traffic issues and prevent accidents on Antrobus Road.

Thank you for your support in making our school community a safer place.



## VISIT FROM BARONESS BARRAN, SHADOW MINISTER FOR EDUCATION, FRIDAY 17TH JANUARY 2025

On Friday 17th January, we were fortunate enough to be visited by Baroness Barran, the Shadow Minister for Education and a current member of the House of Lords. 'Learn with the Lords' is a programme organised by the UK parliament, and we were lucky enough to have our application for a visit accepted.

All of our school parliament were involved in the visit, totalling 75 students. A few days prior we met and agreed our questions, after researching the Baroness' recent contributions to debates in the House of Lords.

After an interactive presentation from the Baroness, where we all learned how the House of Lords works in our parliamentary system, the parliamentarians asked her questions about SEND provision, the importance of reading, children's use of mobile phones, artificial intelligence and the importance of school attendance. The Baroness even had a very exciting prop: a copy of the Children's Wellbeing and Schools Bill, in draft form! It was very exciting for us to see a real-life example of current parliamentary work.

Afterwards, our Head Boy and Head Girl, Charlie and Katie, took the Baroness on a tour of our school.

Below is what some of our parliamentarians thought about the experience:

When Baroness Barran came to The Stonehenge School on Friday 17th January, she gave us many answers to the questions we had from school Parliament. Before Baroness Barran joined the house of Lords, she worked in financial services. Just after leaving her financial services job, she started up a domestic abuse charity which became well known and she was its chief executive for a long time. When the Baroness wanted a career change, she was selected by Theresa May to join the House of Lords. She accepted the job and became Parliamentary Under-Secretary of State for the School System in the previous government.

The Baroness has helped to create many laws in her almost 7 years of being in Parliament and was asked questions about domestic abuse and education every week by ordinary people of the UK. As the Labour party are now in power, she is the Shadow Minister for Education. This means instead of her getting asked the questions, she asks them. There are different ways you can join The House of Lords, either by:

- Being a hereditary peer
- The Prime Minister selecting you due to your good work and expertise
- You are chosen to be a cross-bench peer

Baroness Barran was selected by Theresa May in 2018 for the good work she completed within her charity and she did not have to apply.

The make-up of The House of Lords consists of 70% men and 30% women. Parliament are always trying to get more women into the House of Lords and the House of Commons, but it is difficult as there are no more women in the hereditary line for the House of Lords. The only woman who had come into parliament through this line has sadly passed away. This means the only way to get women into The House of Lords is to choose them from the general population and not through hereditary lines.

SEND children were one of the main focusses of our discussion. We discussed the government contribution of funding towards SEND and the over-labelling of SEND children, and how this can impact those that require support. A few interesting facts that stood out to us all were:

- Students whose parents spend more time on their phones were more likely to have a child with 1-2 thousand fewer words than would be expected at reception age. Therefore, increasing SEND needs.
- Babies who are born in August are more likely to have SEND needs, when compared to babies who are born in September. I wondered if this was because August babies are the youngest in their school year.
- If you cannot read by the time you leave Year 2, you are more likely to require SEND support with reading and speech.

It was a wonderful experience to be able to meet Baroness Barran and have the chance to ask her the questions we had from our school Parliament. Watch out for her next debate in the House of Lords as she said she will mention The Stonehenge School!

Maisie W- Year 7

In my opinion, meeting the Baroness was not just really cool and fun, but was really interesting and helps us to understand what our job is as a parliament member in school. To better improve our school experience, I think we should have some more important people to talk to more students in the school.

Masie B- Year 7

I think that meeting Baroness Barran was a great experience as the feedback she gave us can really improve our school parliament. I hope that she can take what we've said into the real world.

Zoe- Year 7





Sophie Gray one of our Year 10 students has been having an amazing time appearing in Sleeping Beauty at Salisbury Playhouse.

Sophie played the younger version of the villain in the production and said it was exciting being back stage with lots of laughs and amazing costumes

## CONGRATULATIONS TO THE YEAR 8 BOYS FOOTBALL TEAM

The Year 8 football team have qualified for the next round of the county up. Stonehenge progressed with 3/3 wins in the group stage beating Wellington 5-4 in December, followed by beating Pewsey 16-1 and Avon Valley 10-0 in the past week. The boys will find out their next round opponents at the beginning of February where the competition turns into a knockout stage.



## LOOKING FOR AN OUTFIT FOR THE PROM PROM PROJECT SALISBURY

The annual pop up event will be taking place from Tuesday 8th to Friday 11th April at The White Hart in Salisbury. No appointments needed you can just walk in.

Prom  
Night

Wiltshire LOCAL OFFER have launched a new SEND Newsletter

Wiltshire have launched a new SEND Newsletter which parents can log onto by clicking [here](#) .

It provides the latest information on SEND matters in Wiltshire



THE STONEHENGE  
SCHOOL

# CAREERS NEWSLETTER

This newsletter is a collation of all the opportunities we have heard about from employers and universities. Please use the links included to read more information and apply to anything you are interested in. Links are underlined.

## OPPORTUNITIES

National Storytelling Week will be taking place from Saturday 1 February to Sunday 9 February. This fantastic annual event is a joyful celebration of the power of sharing stories. Stories teach us about the world; they allow us to step into someone else's shoes and feel empathy; they help us to relax and escape and they can help develop essential literacy skills. The theme for National Storytelling Week 2025 is 'Reimagine your world'.



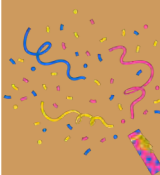
To celebrate the week, National Literacy Trust have organised a range of online writing workshops. The stories in the events are aimed at younger students but they offer the chance to hear from authors so may still be useful for you to learn more about their careers - there may be the opportunity to ask questions. You can find out more here: Tolá Okogwu - 3rd Feb, Steven Camden - 4th Feb, Joseph Coelho - 6th Feb

If you are an avid writer or illustrator, here are some writing competitions that may be of interest:

The Young Cartoonist Awards 2024 are now open to anyone under the age of 30 who is resident in the UK. We are accepting submissions of pocket (gag) cartoons, political cartoons and short strip cartoons. We are looking for a wide range of cartoonists from different regions within the UK, and with different backgrounds.



The Chaucer Heritage Trust has launched its eighth annual writing competition for schools inspired by the works of Geoffrey Chaucer, considered by many England's greatest medieval poet. The special theme of the competition this year is 'Surprise, Surprise!'.



The theme for the Orwell Youth Prize 2025 is 'Freedom is...'. Write about what freedom means to you, in any form you choose, and get personalised feedback and the chance to win a cash prize and books for you and your school.



If you have any questions or need support, please email [office@stonehenge.wilts.sch.uk](mailto:office@stonehenge.wilts.sch.uk)

## JOB OF THE WEEK



Writer

A writer is a person who uses written words in different writing styles, genres and techniques to communicate ideas, to inspire feelings and emotions, or to entertain. This could be a play, book, song, article or essay.

Watch the video to learn more about how much you could earn, working hours and pathways into the industry.

## LABOUR MARKET INFORMATION FACT

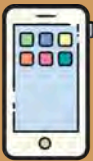
The writing & journalism sector has changed dramatically in the last decade, with the rise of the internet, tech and social media changing the daily flow of newspaper circulations. The number of advertised journalism jobs increased by 79% over from 2019-2022. Source

THE STONEHENGE  
SCHOOL

# CAREERS NEWSLETTER

## OPPORTUNITIES

Returning for the 13th time, the Grierson DocLab: New Entrants is for UK-based 18-25 year olds with a passion for documentary and factual TV who are new entrants to the industry. The programme aims to equip up to 12 successful trainees with the knowledge, connections and work experience to launch their doc careers. There is a webinar to find out more taking place Wednesday 22 January. If you are not yet 18 but interested in working in the TV industry, this is definitely an opportunity to remember for when you do reach Year 13 and turn 18! The Sixth Formers' Guide to Degree Apprenticeships is the new A-Z guide to degree apprenticeship employers in the UK. Produced in partnership with The Careers & Enterprise Company and the Department for Education, the guide explains how degree apprenticeships offer a work-led, debt-free route to a university degree and a graduate job. Springpod have opened applications for these amazing in person work experience opportunities for Year 10 and Year 12 with the Civil Aviation Authority. Applications close on February 28th. urfuture helps young people get hired in their dream career based on their personality. Just like how Netflix replaced Blockbuster and Uber changed Transport, urfuture is on a mission to create a fresh approach for young people engaging with jobs. You can read more about how the platform works here. If you're in Year 10 or 11, you may have heard of T Levels but have questions about what they are or how they work. A T Level takes 2 years and gives you a mix of learning in the classroom and a minimum 9 week placement with an employer. This means you'll learn what a real career is like while you study. If you want to find out more, you can take part in this short course to help you decide if it's the right pathway for you. You can also find a short course on Apprenticeships and Higher Technical Qualifications.



## EMPLOYER SPOTLIGHT

"Bloomsbury is a place for ambitious, driven and passionate people to flourish. As part of our ongoing commitment to diversity, equity and inclusion, we are delighted to offer the Publishing Assistant Apprenticeship. Each apprenticeship is 15 months long, with the majority of Publishing Assistant Apprentices going on to secure roles within the industry." Read more about Bloomsbury Careers here.

## UNI SPOTLIGHT

"Being a student at UCL is about so much more than just acquiring knowledge. Studying here gives you the opportunity to realise your potential as an individual. With more than 400 undergraduate degree programmes and 42,000 students from 150 different countries, we're London's truly global university." Read more about University College London here.

If you have any questions or need support, please email [office@stonehenge.wilts.sch.uk](mailto:office@stonehenge.wilts.sch.uk)



# SHERBORNE



## Sixth Form Rugby Programme Online Open Evening

Thursday 13 February 2025 - 19:00-20:00

---

This is your chance to learn more about our exceptional rugby programme, designed to complement our rigorous academic curriculum.

Discover how our unique approach supports students both on the field and in the classroom. This evening will provide all the information you need to take the next step.

Sign up via the MS forms link below. Please email Louise Dennis, Director of Rugby Coaching, with any questions: [louise.dennis@sherborne.org](mailto:louise.dennis@sherborne.org)

# STAFF VACANCIES

Further details and an application form for all our vacancies can be found on our website via the following link - <https://www.stonehenge.wilts.sch.uk/vacancies/>

## Caretaker

Salary: Support staff grade E £25,183 - £25,992 per annum with 26 days holiday to be taken in school holidays  
Hours are to be discussed with the successful candidate but would be 37 per week, working Monday - Friday

The post will be effective as soon as possible

This is a permanent position

This position will remain open until filled

We are seeking to recruit a reliable, enthusiastic, and efficient Site Operative to join our Site Team to be responsible for maintaining our school premises.

You will support the Premises Manager to keep the school a safe and engaging environment for our students to learn in. This will involve carrying out both reactive and planned maintenance tasks.

## Teaching Assistants

Required as soon as possible

31 hours per week/39 working weeks per year (including all 5 TD Days)

Permanent Contract

Monday - Friday 8.30am -3.00pm, (30 minutes unpaid lunch)

+ 1 hour after school club each week

Grade E, points 6-8 (Actual salary (£18,148 - £18,731))

Due to staff progression and increase in pupil numbers, we are looking to recruit enthusiastic people to become an essential part of the Teaching Assistant team here at The Stonehenge School.

The role requires you to support the learning of specific students with additional educational needs either within the classroom or 1:1, or in intervention groups. You will be working as part of a supportive team.

## Deputy Designated Safeguarding Lead and Safeguarding Administrator

Start Date: As soon as possible

Salary: Grade G, point 12-14 (actual salary £19,641 - £20,964 per annum). Term time only, 39 weeks p.a., including 5 TD days across the year.

30 hours per/week: Monday - Friday 9:00am -3.30pm (30 minutes unpaid lunch)

Contract: Permanent

Closing Date: Wednesday 12th February 2025

To strengthen our safeguarding provision and ensure the highest levels of support for our students, we are seeking to appoint a Deputy Designated Safeguarding Lead (DDSL) who will also provide crucial administrative support for safeguarding and pastoral functions across the school.

The DDSL will work closely with the Designated Safeguarding Lead, Progress Leaders, and Pastoral Managers to ensure the effective implementation of safeguarding policies and procedures. The role will involve managing safeguarding records, completing referrals to external agencies, and ensuring timely follow-up on all safeguarding concerns. The successful candidate will also play a key role in maintaining accurate records and assisting with audits to ensure compliance with statutory safeguarding responsibilities.

You should provide detail outlining your skills applicable to the role and reasons for applying. This should be returned to Mrs D Harker, The Headteacher's PA, The Stonehenge School, Holders Road, Amesbury, Wiltshire, SP4 7PW



## STAFF VACANCIES

Further details and an application form for all our vacancies can be found on our website via the following link - <https://www.stonehenge.wilts.sch.uk/vacancies/>

### Exam Invigilators

Scale B point 2, £12.26 per hour

We require additional Exam Invigilators to work with us at The Stonehenge School. We are looking for enthusiastic and supportive individuals to work varied hours during the school day, mainly during GCSE exam periods but also covering internal and modular exams throughout the year. Must be available to work from 8.30 am to cover morning exams.

Previous experience is not essential, as all training will be provided.

Ideal candidates will be

Reliable and flexible

Have good communication skills

Confident and able to offer reassurance during exams

You should provide detail outlining your skills applicable to the role and reasons for applying. This should be returned to Mrs D Harker, The Headteacher's PA, The Stonehenge School, Holders Road, Amesbury, Wiltshire, SP4 7PW



# HOLDING OUT FOR A HERO

**COULD YOU RESCUE A DOG?**  
ON CHANNEL 4'S  
HIT SHOW

*the*  
**Dog House**

**APPLY NOW**

[WWW.CHANNEL4.COM/4VIEWERS/TAKEPART/THE-DOG-HOUSE](http://WWW.CHANNEL4.COM/4VIEWERS/TAKEPART/THE-DOG-HOUSE)



## Pharmacy First – an NHS service being offered from pharmacies across England

I am writing to you from the representative body of community pharmacies in England to highlight an NHS service which almost all pharmacies across England are now offering for children and adults called **Pharmacy First**.

I understand that student attendance is a high priority for schools and colleges and this free NHS service may assist with getting children back to school/college following a minor illness, as well as also being of use to school/college staff. As such, I thought you may want to bring the service to the attention of your members so that they could raise awareness of it amongst parents/carers of children, as well as school/college staff.

### What is Pharmacy First?

This NHS service allows children and adults to get quick access to healthcare advice as they can walk into a pharmacy and access the service, removing the potential delay of having to wait for a GP appointment. The person will be offered a consultation with a pharmacist in a private consultation room, with some pharmacies also offering the service remotely as a video consultation.

The service supports the following conditions:

- **Earache** (ages 1 to 17 years)
- **Impetigo** (ages 1 year and over)
- **Infected insect bites** (age 1 year and over)
- **Sore throats** (age 5 years and over)
- **Shingles** (age 18 years and over)
- **Sinusitis** (age 12 years and over)
- **Urinary tract infections (UTIs)** in women (ages 16 to 64 years)

The pharmacist will provide advice and, if clinically necessary, a prescription medicine to treat the condition. Any medicines are supplied free of charge to children under 16 years, with the normal **NHS prescription charge rules** applying to people aged 16 or over. Should the pharmacist be unable to help, they will direct the person to their GP surgery or other health professional.

We have developed an animation to explain about the service which is available on **YouTube** and more information can also be found on the NHS website at [nhs.uk/thinkpharmacyfirst](https://www.nhs.uk/thinkpharmacyfirst)  
Resources to promote the Pharmacy First service to parents/carers and staff

✉ [info@cpe.org.uk](mailto:info@cpe.org.uk)  
☎ 0203 1220 810  
📍 14 Hosier Lane, London EC1A 9LQ  
🌐 [cpe.org.uk](https://www.cpe.org.uk)

	Year 7	Year 8	Year 9	Year 10	Year 11
Term 1	Charity Walk (£3)	Charity Walk (£3)	Charity Walk (£3)	Charity Walk (£3)	Charity Walk (£3)
	Alpaca Science club (£15)	Alpaca Science club (£15)	Astronomy students trip to Stonehenge (free)	Philosophy Salisbury Cathedral (£10)	London Dungeon History students (£42)
	Longleat (£20)	Paulton's Park (£27)	Philosophy Salisbury Cathedral (£10)	Robinson College Cambridge (free)	Geography field work (free)
			Paulton's Park (£27)	Paulton's Park (£27)	Thorpe Park (£35)
			Bronze Duke of Edinburgh launch and registration (£32)		Philosophy Salisbury Cathedral (£10)
Term 2	Harry Potter studios (£40)	KS3 Science Live (£30)		Silver Duke of Edinburgh launch and registration (£40)	London STEM trip (£400)
Term 3			Hairspray theatre trip (£30)	Hairspray theatre trip (£30)	An Inspector Calls (£32)
			Cologne (£527)	Cologne (£527)	Cologne (£527)
				STEM Paris (£577)	National Gallery art students (£17)
Term 4	KS3 Science Live (£30)	Battlefields (£220)	Rome (£650)	Rome (£650)	
	Lion, Witch and Wardrobe (£30)	Lion, Witch and Wardrobe (£30)		Globe theatre (£33)	
				Geography field work (free)	
				Tate Modern (£17)	
Term 5		Pencelli (£420)	DofE Bronze practice expedition (£15)		
			DofE Bronze qualifying expedition (£20)		
Term 6		Marwell Zoo (£18)		DofE Silver practice expedition (£20)	Prom (£35)
				DofE Silver qualifying expedition (£30)	
				Geography Field work (free)	
				Andover college visit (free)	

FOLK\* ROCK\*  
ACOUSTIC\* ROOTS\*  
CHOIRS\*

5 STAGES OF  
LIVE MUSIC

ALL PROFITS DONATED TO CHARITY



FOOD BY MERAKEI  
AND OAK OVEN  
PIZZA

WINTER FESTIVAL

SAT 18 JAN  
11AM - 10PM

BAR SELLING KETTLESMITH'S BEER  
AND HONEY'S CIDER

MINI MAKER'S MARKET  
WASSAIL SINGING & DANCING  
KIDS' ARTS & CRAFTS



All Day Tickets ( from 11am) £25 / £13.50  
Evening Tickets (from 7pm ) £12  
[wiltshiremusic.org.uk](http://wiltshiremusic.org.uk)

Raising money for:



In aid of  
**PARKINSON'S<sup>UK</sup>**  
CHANGE ATTITUDES.  
FIND A CURE.  
JOIN US.



Charity number: 1026160

HAPPY NEW YEAR

WE ARE KICKING 2025 OFF WITH A BANG!  
WE ARE RECRUITING ATHLETES IN OUR TEAMS AND WE WOULD LOVE TO  
HELP KICKSTART YOUR 2025.

WHETHER YOUR A GYMNAST LOOKING TO LEVEL UP AND BECOME PART  
OF A COMPETITION TEAM OR WHETHER YOU ARE A TOTAL BEGINNER.WE  
ARE HERE TO HELP AND SUPPORT YOU EVERY STEP OF YOUR  
CHEERLEADING JOURNEY.

- ★ BUILD CONFIDENCE
- ★ BE PART OF A FUN FRIENDLY TEAM
- ★ BE PART OF THE CHEER COMMUNITY
- ★ LEARN NEW SKILLS
- ★ GAIN LIFELONG FRIENDS

WE OFFER CLASSES FROM 3 YEARS OLDS RIGHT THE WAY THROUGH TO  
ADULTS.  
PARENTS YOU CAN ALSO BE PART OF A FUN, SUPPORTIVE GROUP WITH  
NO EXPERIENCE NECESSARY JUST BRING YOUR ENERGY.

JOIN TODAY AND START 2025 THE RIGHT WAY!



**ENROLLING NOW**

**WILDCATZ WARRIORS ACADEMY**

ARE YOU READY TO SHINE?

**Tinies 3-6years**  
**mini 5-8 years**  
**youth 8-11 years**  
**junior 10-14 years**  
**senior 12+**  
**masters 25+**  
**all abilities welcome**

JOIN OUR EVER GROWING CHEER COMMUNITY, A PLACE WHERE FITNESS IS A REWARDING AND FULFILLING JOURNEY.

based in durrington lifestyle fitness unit  
prices start from £22.50 per month

Book today at [wildcatzwarriorscheerleading@gmail.com](mailto:wildcatzwarriorscheerleading@gmail.com)

Facebook Wildcatz warriors cheerleading



**STAGE COACH**

SALISBURY & AMESBURY

ENROLMENT NOW OPEN FOR A

**2-WEEK TRIAL**

AT STAGECOACH, WE PRIDE OURSELVES ON PROVIDING A NURTURING AND INCLUSIVE ENVIRONMENT WHERE CREATIVITY FLOURISHES.

OUR EXPERIENCED AND DEDICATED INSTRUCTORS ARE PASSIONATE ABOUT HELPING YOUR CHILD GROW AND DEVELOP THEIR SKILLS WHILE BUILDING CONFIDENCE AND MAKING LIFELONG FRIENDSHIPS.

Visit our website for more info  
[www.stagecoach.co.uk/salisbury](http://www.stagecoach.co.uk/salisbury)



Time Out For Parents - The Teenage Years

Being the parent/carer of a teenager can be hard! This course can help.

Come and meet other parents/carers to discuss ideas and ways to support your teenager. They are going through so many changes and live in a hi-tech world, and that isn't easy.

Learn to find your own way through the challenges of the teenage years. Find out how and why our relationships with our teens change and how we can deal with that, all in a space with other parents/carers facing the same challenges.

Join us virtually on Microsoft Teams;

Beginning Thursday's 16th, 23rd, 30th January, 6th, 13th, 27th February & 6th March 2025.

<https://wiltshiretogether.org.uk/alltogether>



Family Hub  
Wiltshire Council



## Support We Offer

We are here to help with a whole range of topics including:

Ideas around implementing routines and setting boundaries.

Help to understand your child's needs and build your confidence as a parent.

Help around finances, housing applications, debt support and accessing benefits.

Supporting you 'back to work'

Volunteering opportunities

## We can help families access:

Baby Bundles

Healthy start vitamins

Advice on local childcare and applying for funding.

Introductions to other services

## Facebook

Our Wiltshire Family Hub Facebook page is another way for families to stay up to date with current services. Make sure you like and follow to stay in touch with us.

Simply click here:



## Get in touch with us

If you have any questions or would like more information about our services please call us on one of our numbers below or check out our website:

Freephone:

0800 970 4669

wiltshirefamilyhub@spurgeons.org

Other useful numbers:

Health visitor – Single Point of Access

0300 247 0090

National Breastfeeding helpline

0300 100 0212

Fearfree (Domestic Abuse support Service)

01225 775276



National

Domestic Abuse Helpline

0800 2000 247

Click here to visit our website

[www.wiltshirefamilyhubs.org.uk](http://www.wiltshirefamilyhubs.org.uk)